

DECCA

LARGE SCREEN

DUAL-UNIT FRONT PROJECTION

TELEVISION RECEIVER



. . a brilliant cinema-like picture

3 feet 4 inches wide by 2 feet 6 inches high

To the list of outstanding instruments produced by Decca may now be added the Large Screen Front Projection Television Receiver. Giving a picture of cinema quality, 3 feet-4 inches by 2 feet-6 inches in size on a flat screen, and free from edge distortion or glare, this revolutionary new model marks a further advance in the supremacy of Decca Television.

Projection television, which was pioneered by Decca, has been given a new standard of excellence by this latest development of Decca research.

The Large Screen Receiver with its two separate units both beautifully finished in polished walnut, gives a matchless picture which can be enjoyed by the whole family for long periods without eyestrain.

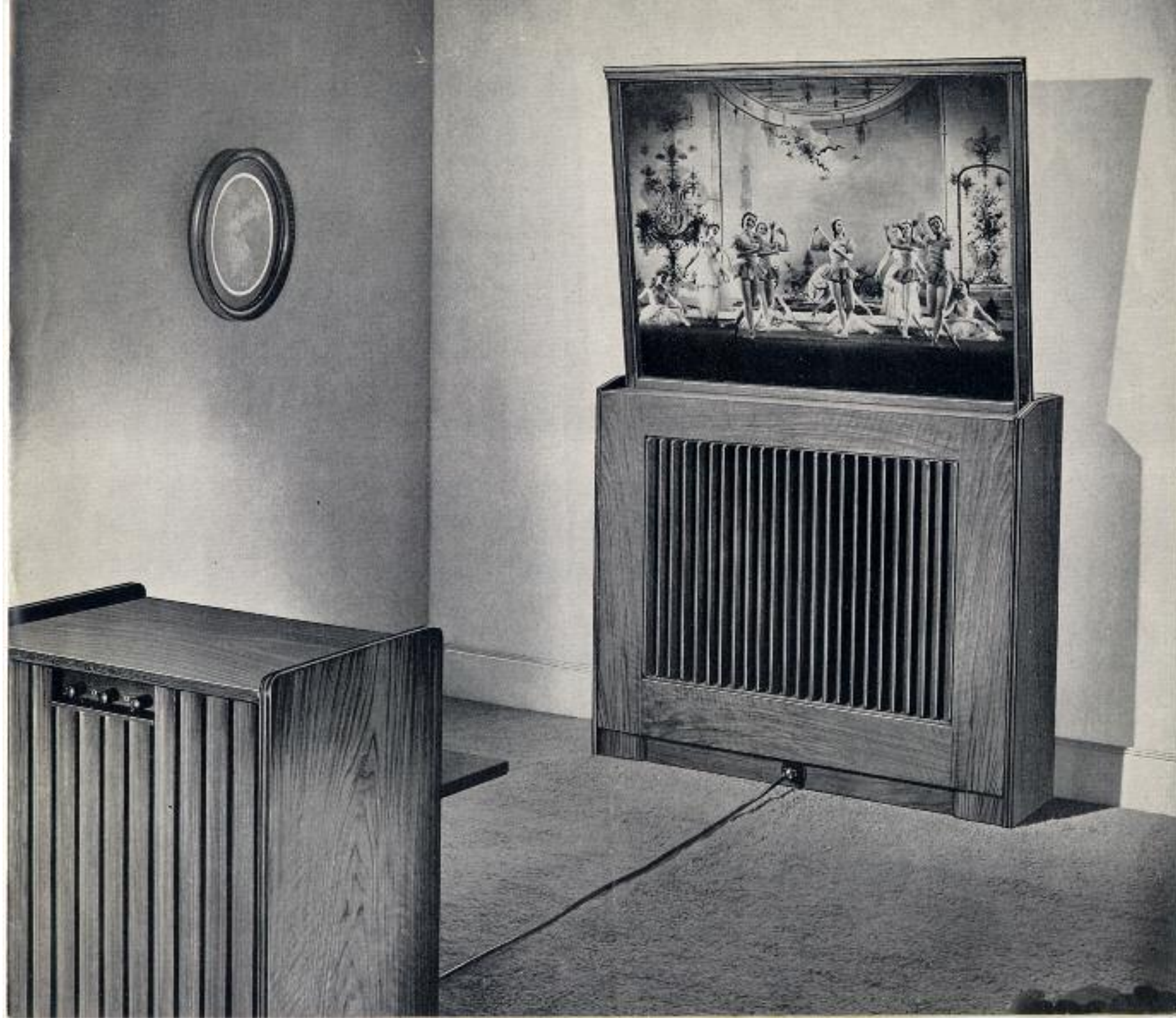
This new and unique instrument is convincing proof of the leadership of Decca in the field of television, and will arouse your admiration not only for the size and clearness of the picture, but also for the design of the 18-valve receiver which provides it.

A glance at the technical specification on page four will be enough to assure you that this new

Decca instrument has been made to the same exacting standards as all other Decca television receivers, and may be relied upon to give years of reliable service without becoming out-moded.



A: Receiver and Projection Unit.
B: Screen and Speaker Unit of the
Decca Dual-Unit Front Projection
Television Receiver.



DECCA LARGE SCREEN DUAL-UNIT FRONT PROJECTION TELEVISION RECEIVER

SPECIFICATION

The Decca Large Screen Television Receiver comprises two separate units, joined by a single cable for operating purposes, but which may be completely disconnected from one another in a matter of seconds when not in use.

The Receiver Unit is contained in a compact cabinet of polished walnut mounted on smooth-running castors. This cabinet conceals a 28-valve superheterodyne television receiver and an optical unit which projects a picture formed on the face of a miniature cathode-ray tube on to the front surface of a flat viewing screen mounted on the speaker unit.

The receiver is of the very latest design and incorporates refinements exclusive to this new Decca model, including a special electrical focus circuit, and trapezium controls which enable the highest possible degree of picture linearity to be obtained. An adjustable synchronization control and a variable interference limiter ensure that a good, steady picture is obtained even under adverse conditions in areas of difficult reception.

Only three user controls—Volume, Focus and Brilliance—are needed for normal use, and these are conveniently placed on a panel at the rear of the receiver unit. A hinged panel at the front of the cabinet conceals the lens aperture when the receiver is not in use.

Speaker Unit. This contains, not only the retractable viewing screen, but three high-flux 10" permanent magnet loud-speakers, mounted on a baffle of wide proportions. The mains and aerial connections are made to sockets fitted at the rear of this unit, enabling the connecting leads to be concealed.

The screen itself is aluminium-sprayed, and lifts up from inside the speaker cabinet. When not in use, the screen slides down inside the cabinet to be hidden from view. The speaker cabinet, which is also finished in polished walnut, then itself becomes a handsome piece of furniture.

Connecting Cable. This conveys the mains supply current, speaker feed and aerial cable to the receiver. Six-way plugs are fitted to either end for simple and quick connection. The cable carries a marker device to enable the two units to be set at the correct distance apart.

Picture Size. An image 40" by 30" is projected on to the front of the screen. Extreme linearity and clearness of definition are outstanding features of the picture thus obtained.

Aerial. The receiver will work with any standard television aerial which has a co-axial feeder of 80 ohms impedance.

Models Available. The Decca Large Screen Receiver is supplied as a single-sideband model for any one of the five B.B.C. television channels. For the London district only a high fidelity double-sideband model can be supplied to special order.

Sound Output. An output of $1\frac{1}{2}$ watts is obtained from the three speakers which are connected in parallel.

Price. The Decca Large Screen Dual-Unit Receiver complete: £350 *os. od.*, inclusive of Purchase Tax.