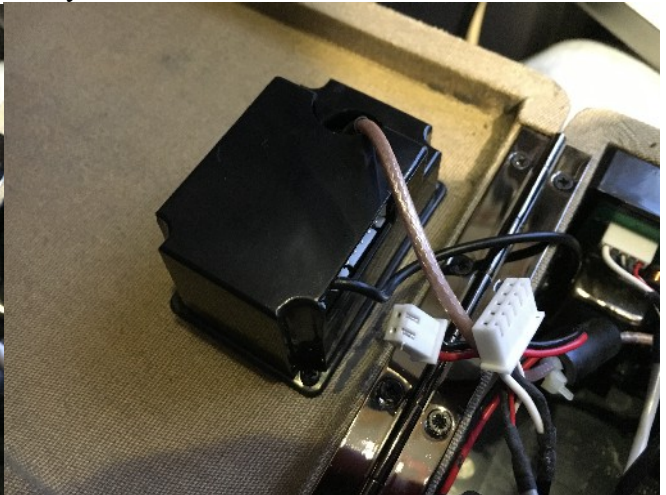
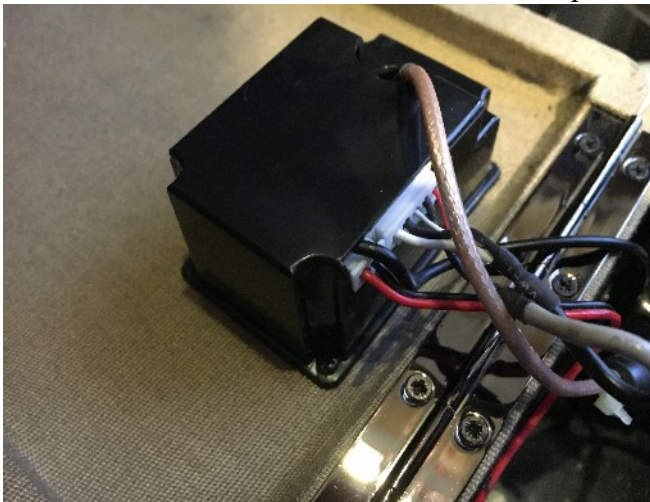


Disassembly of Roberts RD50, and similar radio's

Firstly, remove the antenna by unscrewing it from the F connector on the back. Then remove the nut and washer from the connector.



Open the back, locate the black box which contains the antenna connector, and the line out DC in sockets, pull out the 2 plugs, one for the battery box and one for the audio. Do not pull the antenna cable, or the thick black cable, as these are permanently connected.



Remove the 4 screws in the corners. This will release the box and the plastic escutcheon from the back. The escutcheon may need a gentle shove from the inside to get it loose!





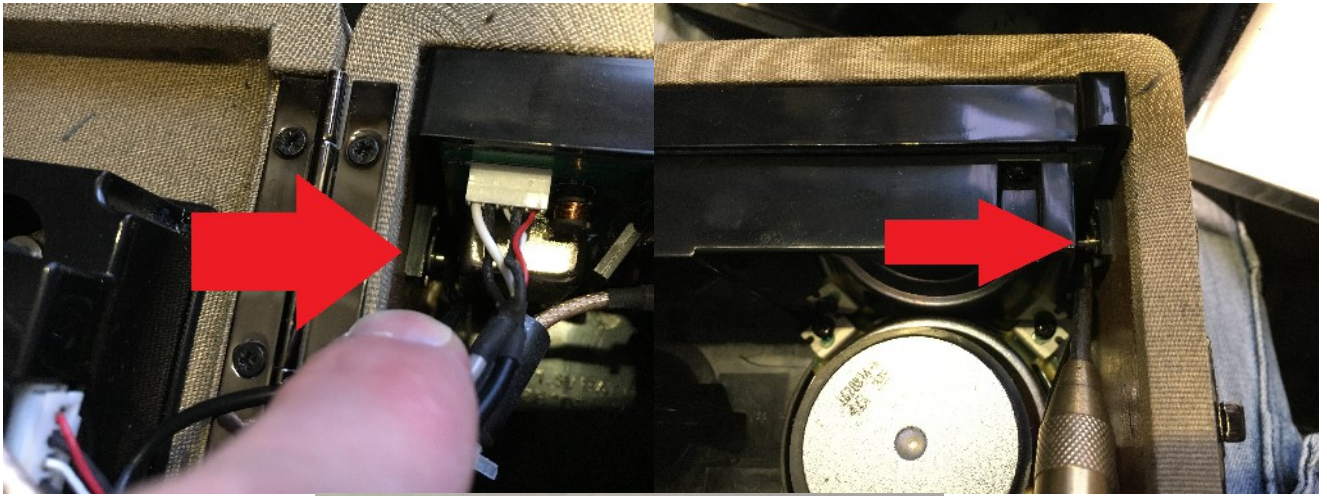
Once the escutcheon is out of the way, there is another nut on the antenna connector, remove this and the connector is then free from the back cover.



With the back cover open, you should see the back of the speaker, the 2 leads connected to it can be removed by gripping the connector and gently pulling it.



Now comes the fiddly bit, removing the handle. Locate the cir-clip as shown. Now using some fine nose pliers carefully push the clip off. Don't loose the cir-clip! repeat for the other side. The handle should now just pull out of the radio easily (actually, it'll probably fall off once the cir-clips are off!)



Once the handle is off, this will expose the threaded bushes (big bolts with holes in them?!) which hold the radio chassis in the case. Unscrew these with a large screwdriver, taking care not to damage them.



Also, there is a washer in the hole, which you will need to remove and save with the threaded bushes.



Once these are out you can begin to extract the chassis, firstly though, remove the control knobs from the radio, they just pull off.

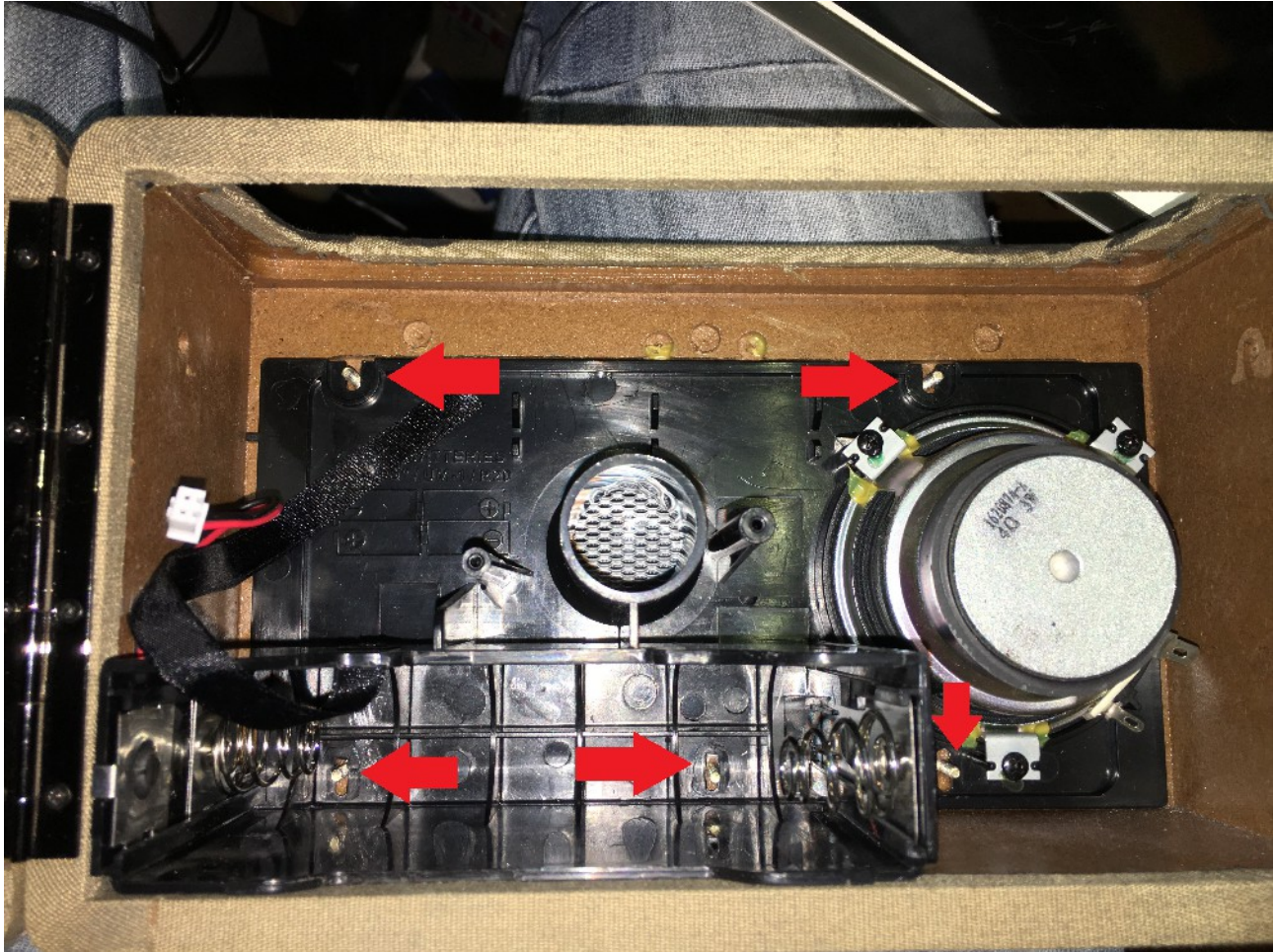
Push on the control panel of the radio, and it should drop down into the case as shown, this may require some force, mine was a tight fit, mixed with the fact the old covering had become sticky. Then carefully wiggle the chassis out past the speaker and the case.



Now you can begin to remove the battery box/ speaker baffle. This is very fiddly! There are 5 plastic nuts (actually, a plastic thing with a metal insert...), 2 along the top, one under the speaker, and 2 in the battery box. They all need to be removed.



They unscrew, leaving a threaded stud behind.



The 2 in the battery box are the most fiddly. Once these are removed, the whole assembly will just lift out of the case, the speaker mesh should also come out attached to the front with glue, but the glue may have dried out, in which case the mesh will still be in the radio.



You can remove the 'Roberts' badge by simply pushing on the 2 pegs as shown, try to push them evenly, or a little at a time, so as not to break the pegs.



There are 4 rubber feet under the radio, which will simply pull off. It may be necessary to pry them with something thin and metallic, so as not to separate the rubber from the pin.



That's it! You should now be left with an empty radio case. Only things left to do now are to unscrew the hinge, and carefully pry off the clasp that holds the case shut. Save all your fixings in a bag or something for later when you re-assemble the radio. Everything should be re-fitted to the case in the reverse order, all plugs that were unplugged previously only fit into their own sockets that they came out of.