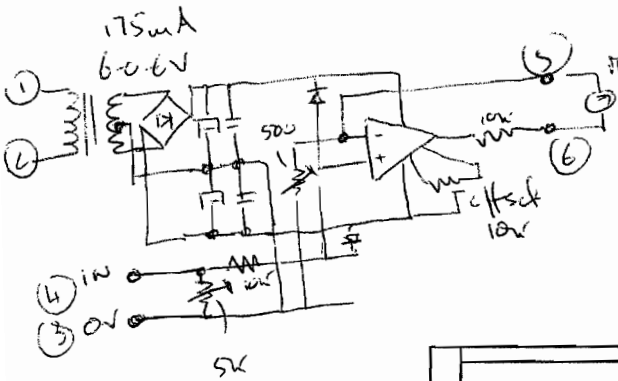
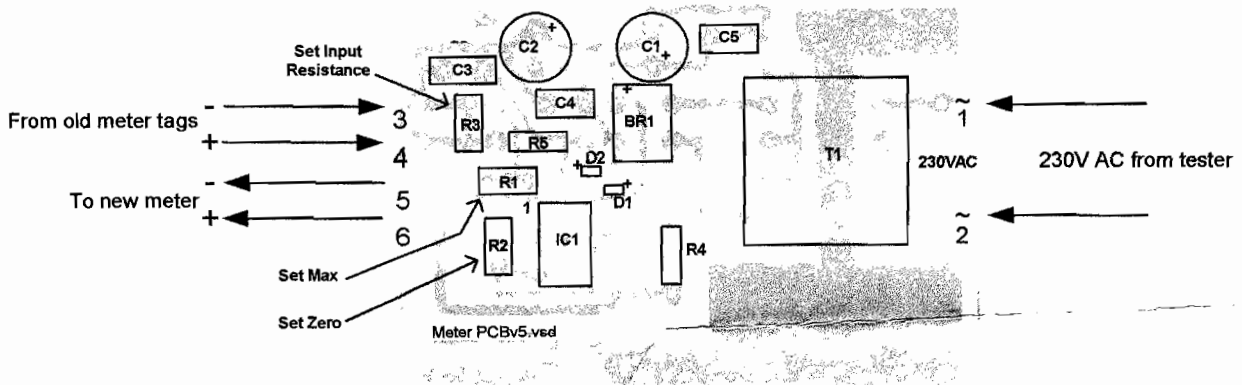


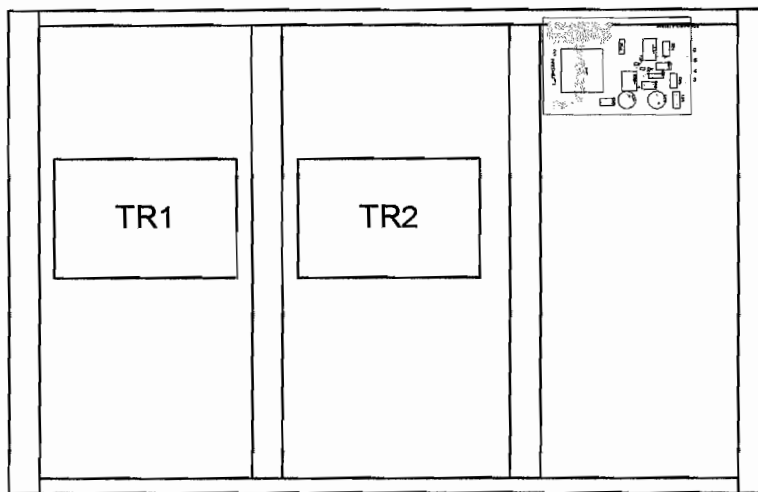
remove meter scale & re-essse
to put sticky label scale

Installation and Calibration Instructions

1. Input resistance pot R3 is supplied pre-adjusted to 2450 ohms measured across terminals 3/4 (original 3250 ohm movement with 10k shunt) *no-resistor to be added*
2. Remove shunt resistor from old meter (on tagboard that old meter wired to).
3. Install and connect as shown in diagrams below.
4. With tester turned off - zero the meter movement (mechanical adjustment).
5. With tester switched on and set to heater continuity / roller switches set to 00000000 adjust R2 for zero deflection.
6. Measure mains voltage and set tester mains voltage selector accordingly.
7. With tester switched on and set to "Set ~" adjust R1 to calibrate meter for mains voltage.
8. Re-check 5 and if necessary repeat 6/7.



Meter	R1	R4
1mA	200R	3k3
500uA	500R	10k
100uA	2K0	22k



Installation position - CT160