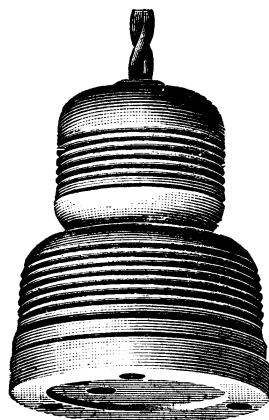


# WALL-PLUGS.

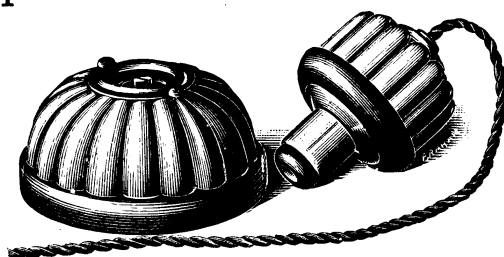
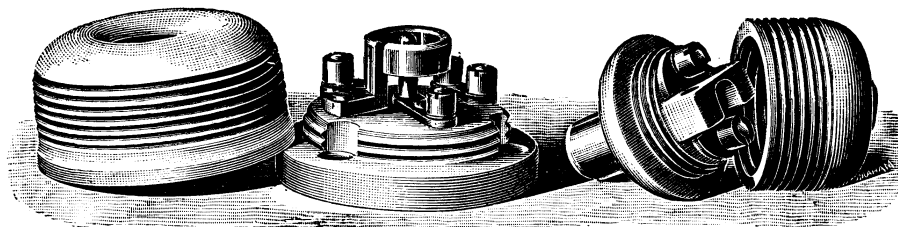
THIS useful device consists of two parts ; the fixed part called the **SOCKET**, the terminals of which are permanently connected to the Electric Circuit, and the movable part called the **PLUG**, which by means of a flexible wire is attached to a Hand Lamp, Standard Motor, Cooking Apparatus, or any other electrical apparatus, which it is desired to move about, to operate from any part of the house. In operation the plug is pushed into the socket, the connection being made either by two prongs or concentric tubes. The latter method is to be preferred, because it works easier in the dark, and is less liable to arcing. Sockets and plugs must be interchangeable throughout the house. They should be highly insulated and have Cut-outs, as flexible wires moved about are very liable to short circuit. The two wires of the flexible should be divided by an insulator at the base of the plug, and pass through a cord grip to remove the strain off the terminals. It is also desirable that wall sockets should be of neat appearance, and as flat as possible, so as not to project too far from the wall.

## CONCENTRIC SOCKET.

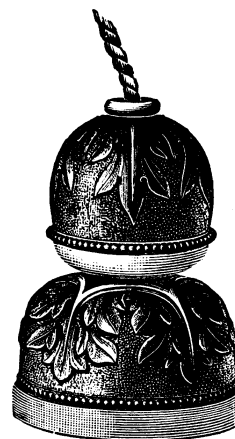
This type of Socket is a new design of ours, and should answer all purposes. From a mechanical point of view, it is thoroughly well constructed and of extremely neat appearance, it is small in diameter and does not project far from the wall. The Bases are of China, and the Covers can be supplied in either **China, Polished Wood or Brass**. From an electrical point of view it has none of the disadvantages hitherto found in these fittings ; the opening in the cover is so small that short circuiting is impossible. Having but one Plug contact can easily be made in the dark, the plug being round it is immaterial which way it is inserted, and the method of wiring is an improvement on any other type hitherto supplied. It is also provided with a Cut-out.



No. 1781



No. 1791



No. 1795

SCALE :  $\frac{1}{2}$ .

Carrying Capacity.	Dimensions at Base.	Catalogue No.	Price. Plain, Cream or Black China.	Catalogue No.	Price. China Base, Wood or Gold Lined China.	Catalogue No.	Price. Brass Cover.	Catalogue No.	Price. Highly Chased Cover.
1-5 amp.	2 in.	1781	3/6	1785	4/-	1791	4/-	1795	17/6
5-10 „	3 in.	1782	6/6	1786	7/6	1792	7/6	1796	25/-

**SPECIAL.**—We make this Socket for use in connection with Electroliers, enabling the lighting of a Table Lamp from the Electrolier hanging over the same. Price 17/6