

FIG. 1

Hole A..... $1\frac{3}{16}$ " dia. hole
Hole B..... $\frac{3}{4}$ " dia. hole
Hole C..... $\frac{3}{8}$ " dia. hole
Hole D..... $\frac{1}{4}$ " dia. hole
All other fixing holes
are 4BA clearance.

Overall chassis dimension
 $13 \times 7 \times 3$ "

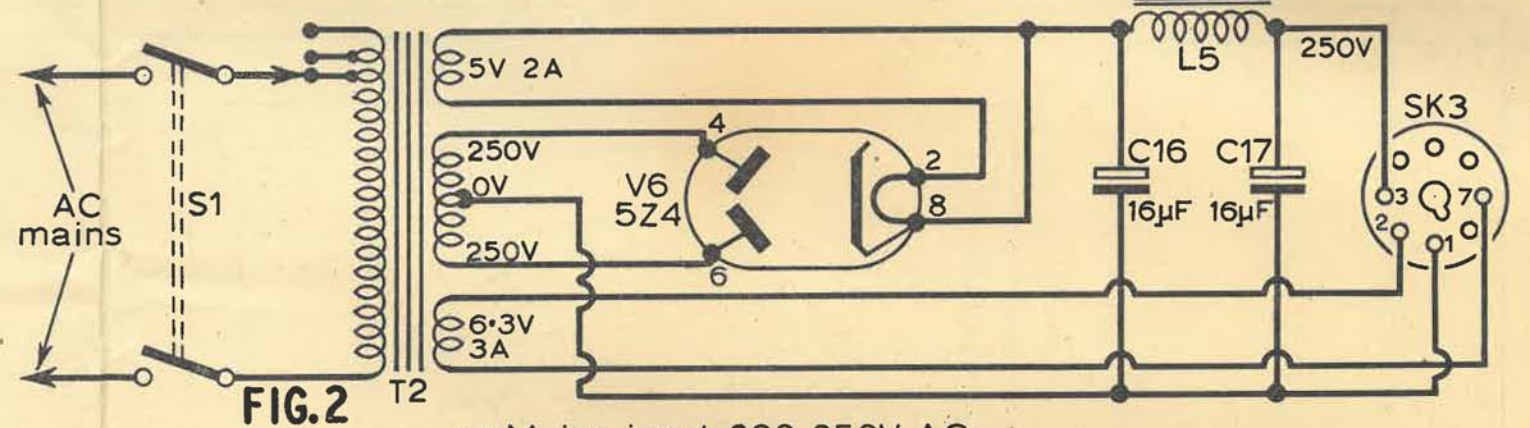
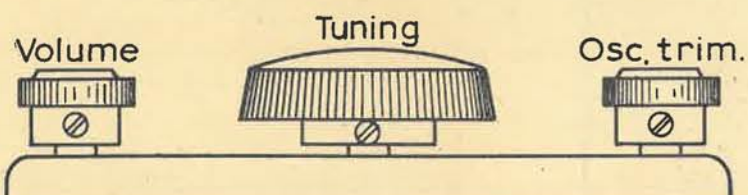


FIG. 2

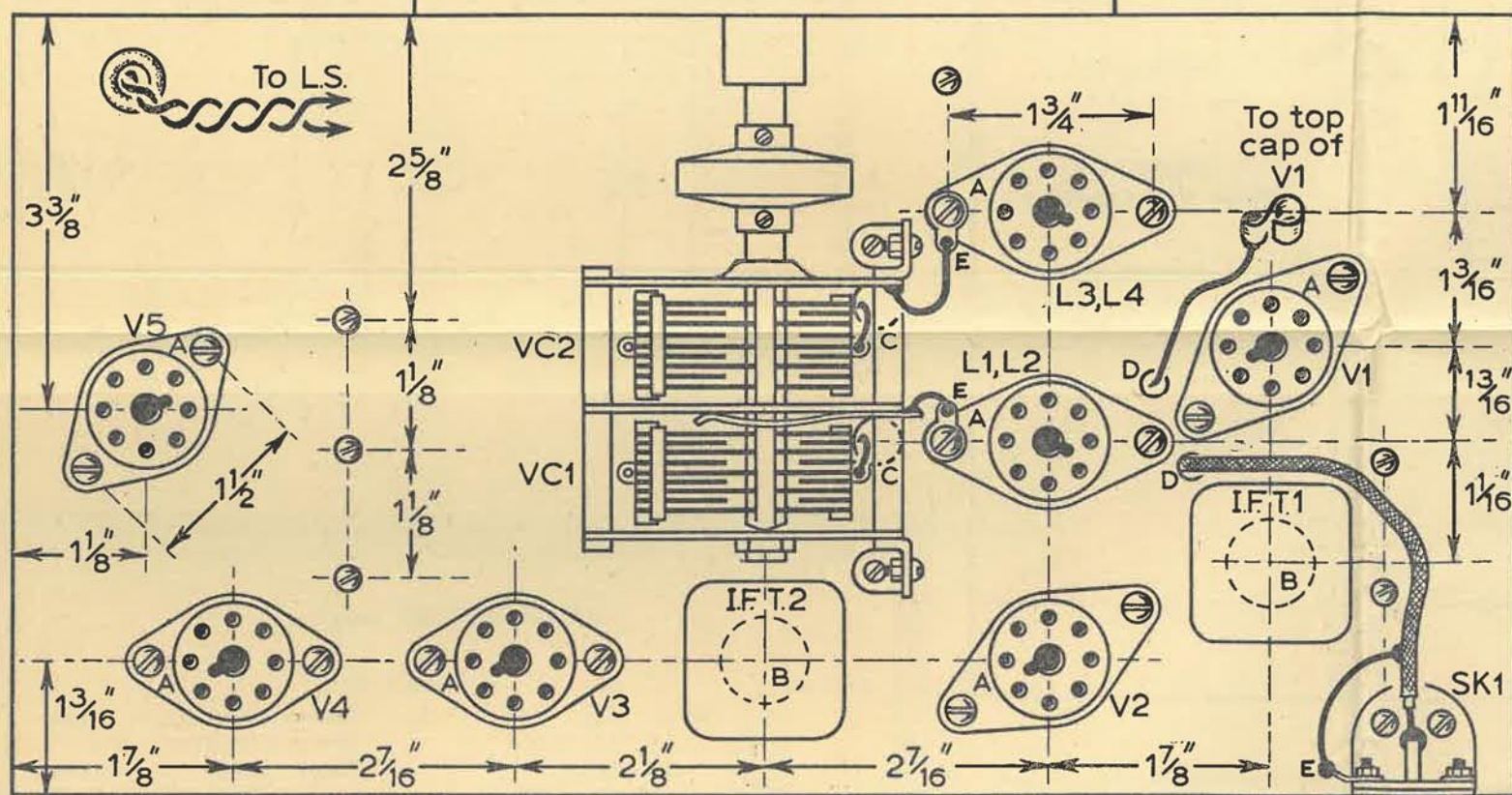


FIG. 3

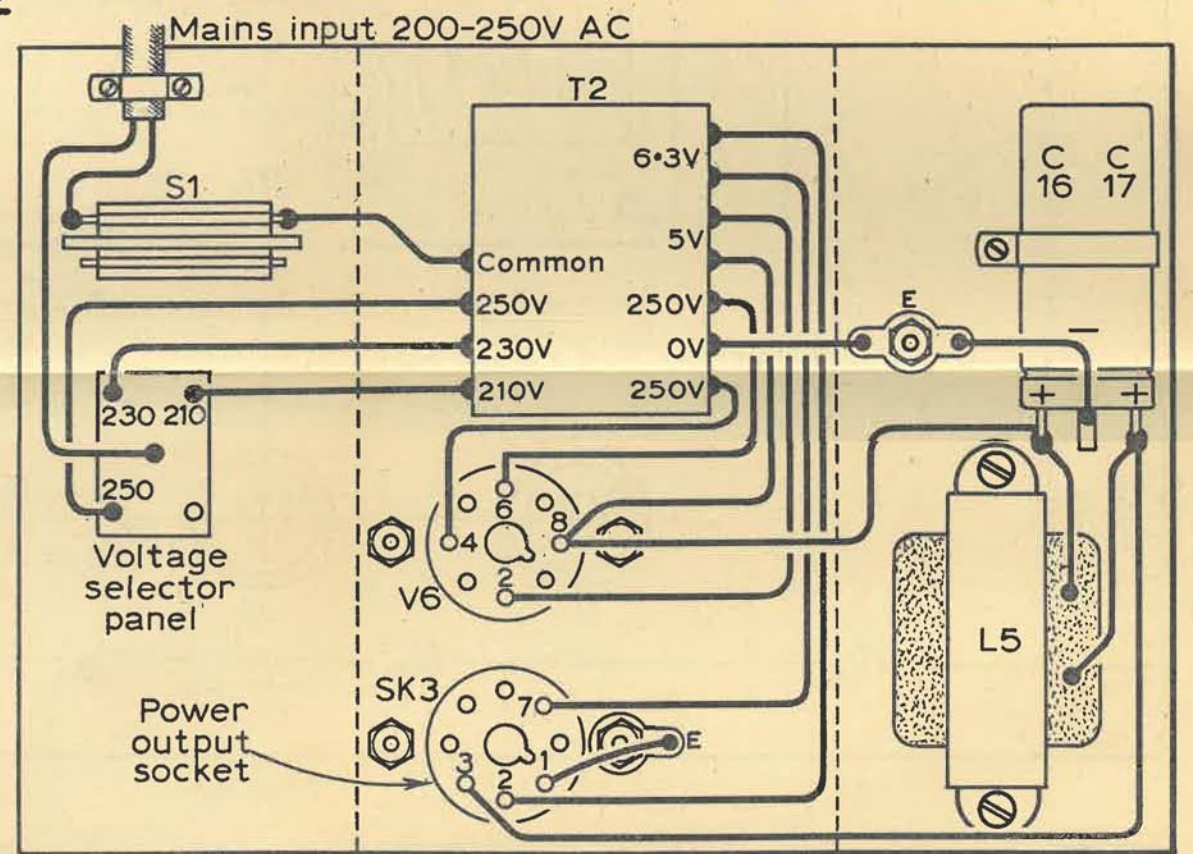


FIG. 5

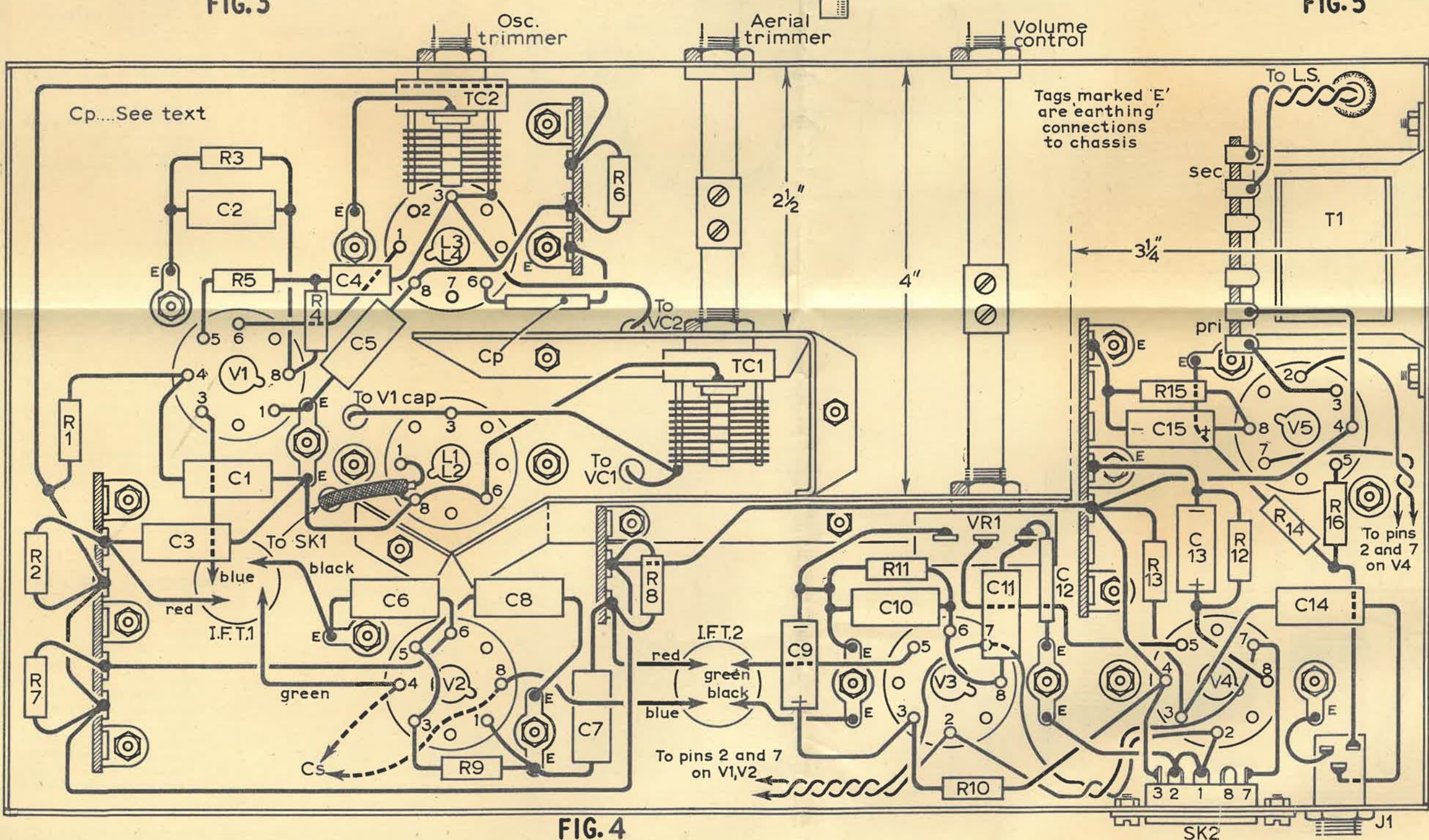


FIG. 4

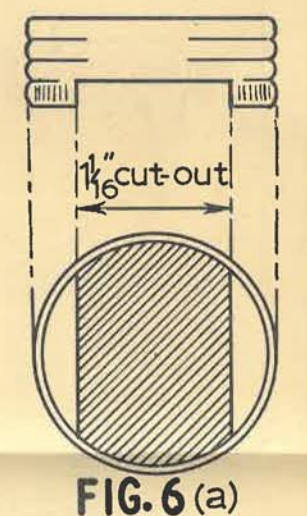


FIG. 6 (a)

Lid clamped
between holder
and chassis

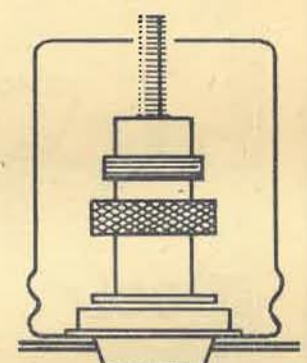


FIG. 6 (b)