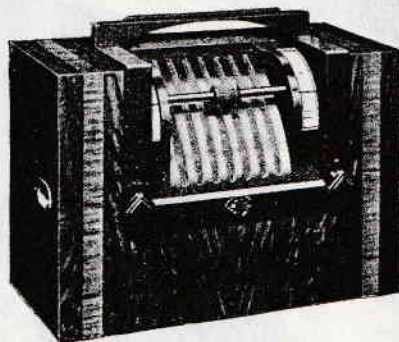


Craftsmanship, at a very reasonable cost. Features include inclined control panel, triple tuning scales and full size M.C. speaker; in walnut cabinet.

Cash price **9½ GNS. (A.C.)**

10 GNS. (A.C./D.C.)

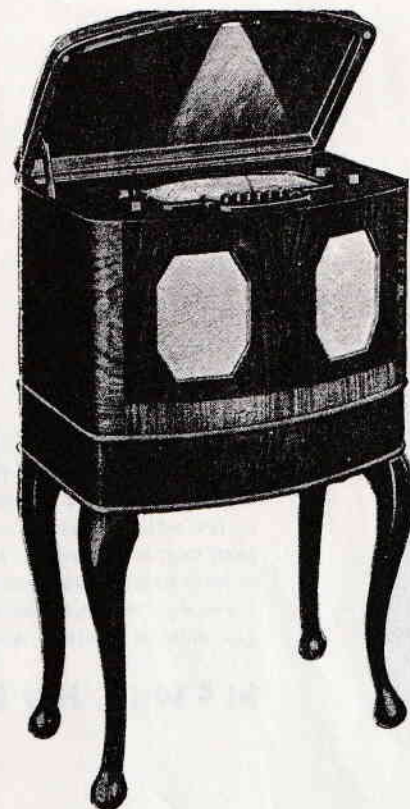


McMICHAEL 808

This is a new mains version of the recently released "Bijou" battery portable, just as small and handsome, and needing only a mains connection; you really must hear the 808 before you can appreciate its delightful performance. 5-valve 8-stage superhet chassis with 2 watts output. Rotabar tuning, etc. In leatherette or inlaid walnut.

Cash price (Leatherette) **9½ GNS. (A.C.)**

Walnut, **10 GNS.**



McMICHAEL 138

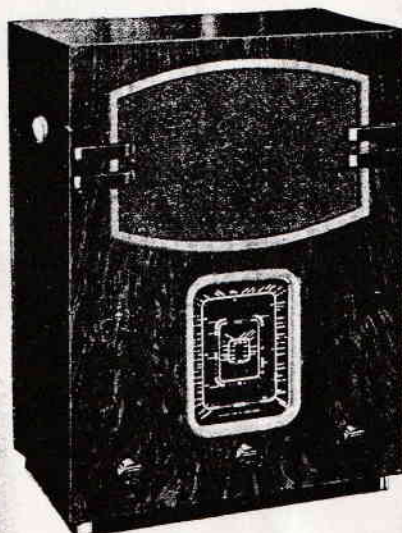
(above)

A luxury all-wave model combining the beauty of an original cabinet design with the extra tonal quality of twin-speakers and the simplicity

of push-button tuning on your six favourite stations. 5-valve 8-stage bandpass circuit with 5 watts output, tone control and easy manual tuning, in inlaid walnut cabinet.

Cash price **18½ GNS. (A.C.)**

With stand, **20½ GNS.**

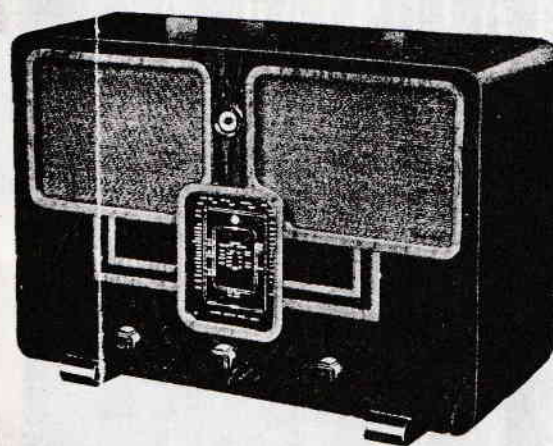


McMICHAEL 371

For sound construction and efficient performance, this is an attractive proposition. The cabinet work is solidly carried out in walnut, range is very satisfactory and the Polychrome tuning extremely simple. 7-stage band-pass all-wave.

Cash price **11 GNS. (A.C.)**

11½ GNS. (A.C./D.C.)



McMICHAEL 372

The extra tonal quality of the McMichael twin stereophonic speakers is available in this model at practically no extra cost, and is coupled with a very useful performance on short and broadcast wave-lengths. The cabinet is large and of inlaid walnut, refinements including Polychrome tuning, magic eye, tone-control, etc.

Cash price **14½ GNS. (A.C.)**

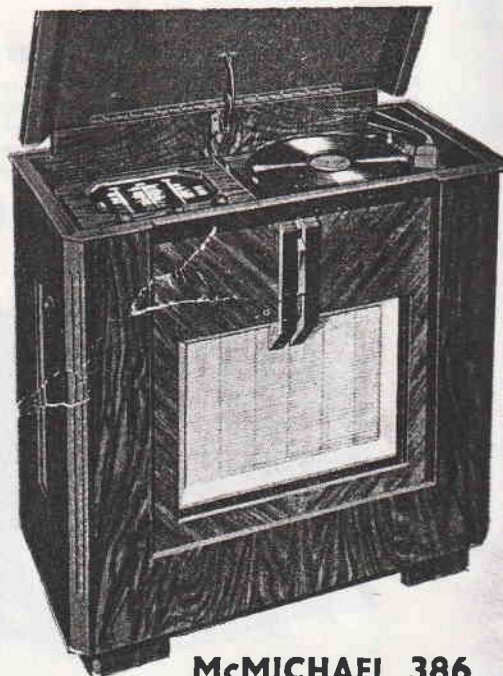
McMICHAEL 802

(above)

If you are looking for something finer and altogether different, you must consider this design. The performance is as striking as the appearance, the motor-driven push-button tuning giving you eleven stations automatically, whilst the 9-valve 11-stage, all-wave chassis has almost unlimited range and superb tone; cabinet of inlaid walnut.

Cash price **24 GNS. (A.C.)**

Stand £2.15.0 extra.



McMICHAEL 386

The 386 will certainly satisfy every demand. The heavy inlaid walnut cabinet will bear comparison with any, the reproduction is exquisite and range really admirable. 5-valve 8-stage chassis with 5 watts output to Concert Grand speaker.

Cash price **20 GNS. (A.C.)**

McMICHAEL 137

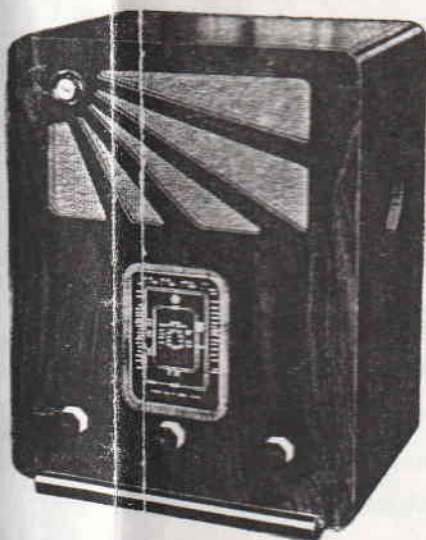
(right)

A twin-speaker all-wave de-luxe, similar to the Model 138. The bow-fronted walnut cabinet is a beautiful item of furniture, whilst the tone and range will satisfy the most critical and the Giant Tuning Dial rises automatically to face you. Eight-stage band-pass chassis with 2-speed tuning, tone control, etc.

Cash price **17 GNS. (A.C.)**

17½ GNS. (A.C./D.C.)

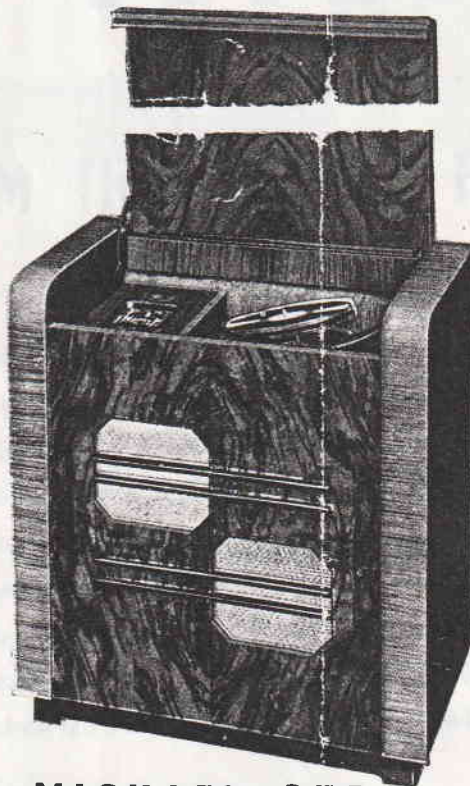
With stand, 2 GNS. extra.



McMICHAEL 374

With no external aerial, or any connection other than a mains lead, this all-wave transportable gives you a choice of programmes from the whole world; it is thus ideal for flat dwellers. In walnut cabinet, with 6-valve all-wave chassis, 3 watts output and Polychrome tuning.

Cash price **16 GNS. (A.C.)**



McMICHAEL 375

You must go a very long way to find a finer radio-gramophone. The walnut cabinet represents modern craftsmanship at its best, the quality from the twin speakers must be heard to be believed and the range is world-wide. High-power 6-valve 9-stage all-wave.

Cash price **29 GNS. (A.C.)**

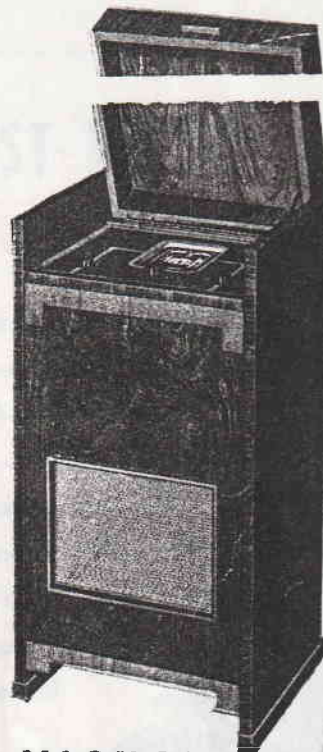
With record changer

35 GNS.

Cash price **31 GNS. (D.C.)**

With record changer

38 GNS.



McMICHAEL 401

This model offers you the improved appearance and better reproduction of a console for a very modest cost. The solid hand-polished walnut cabinet houses a powerful 7-stage band-pass all-wave chassis.

Cash Price **14½ GNS. (A.C.)**

15 GNS. (A.C./D.C.)