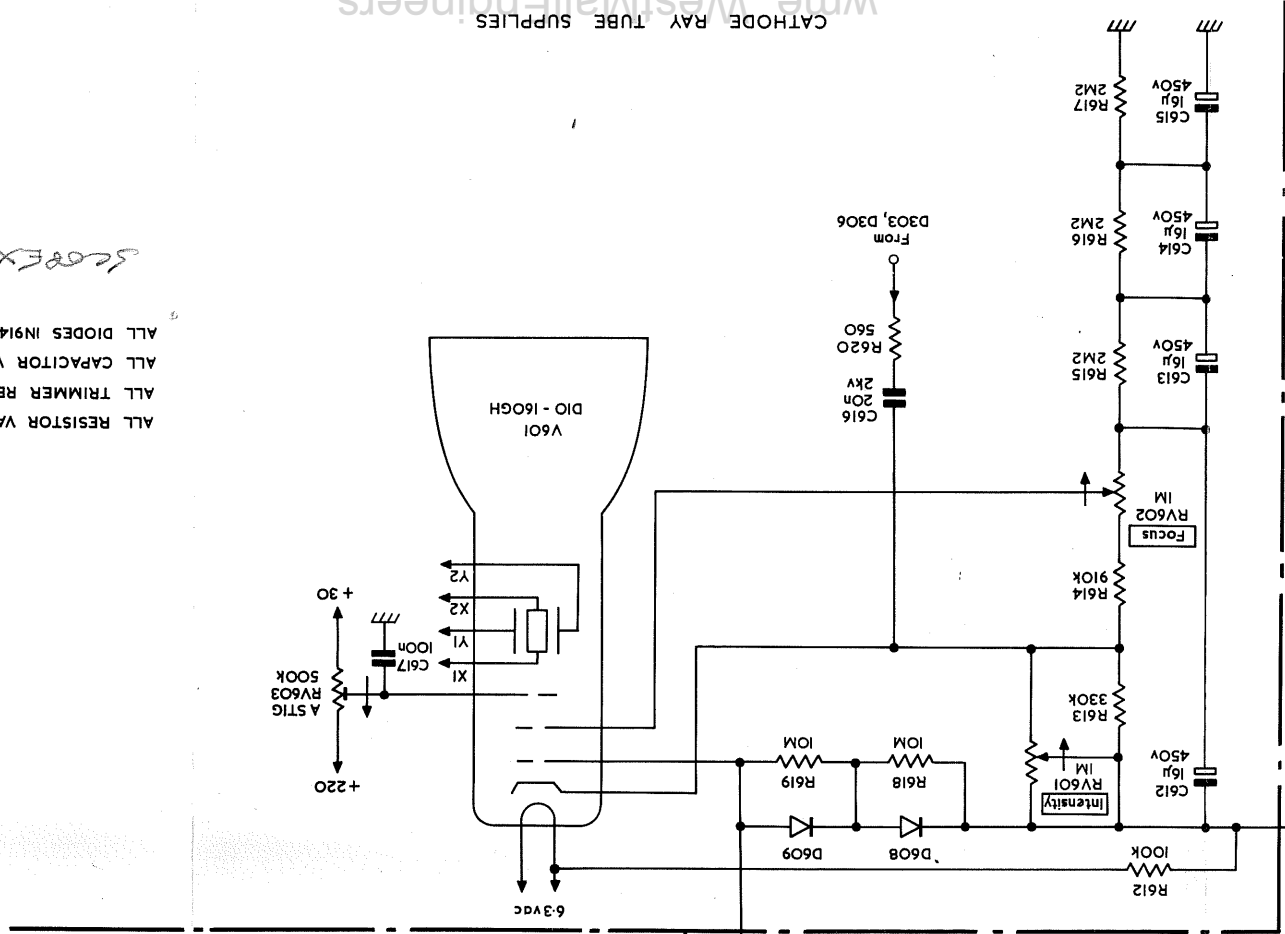
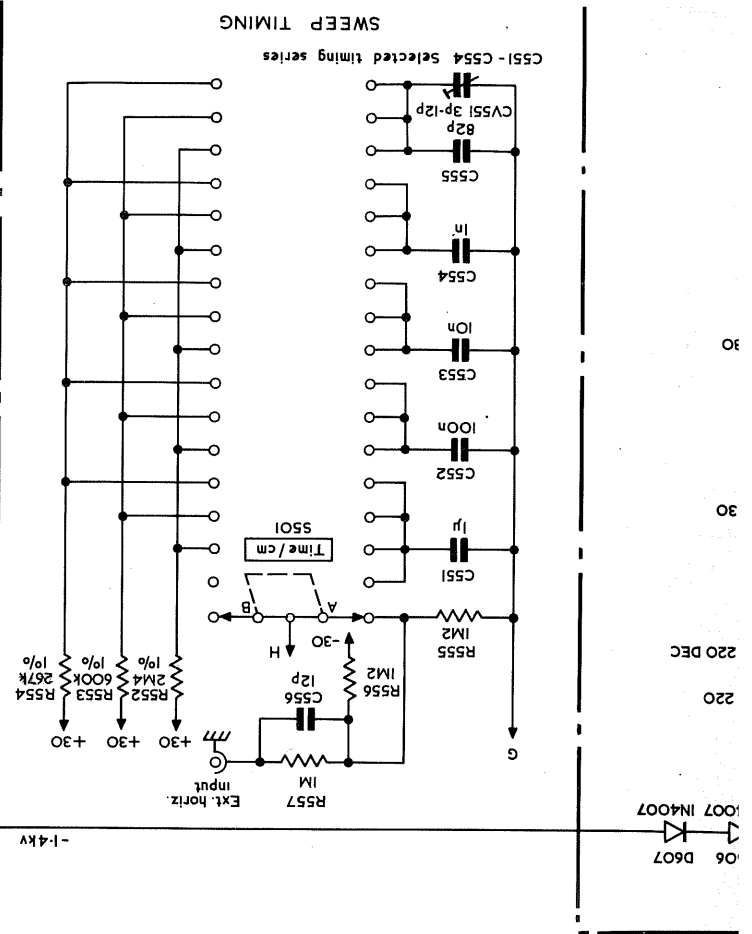
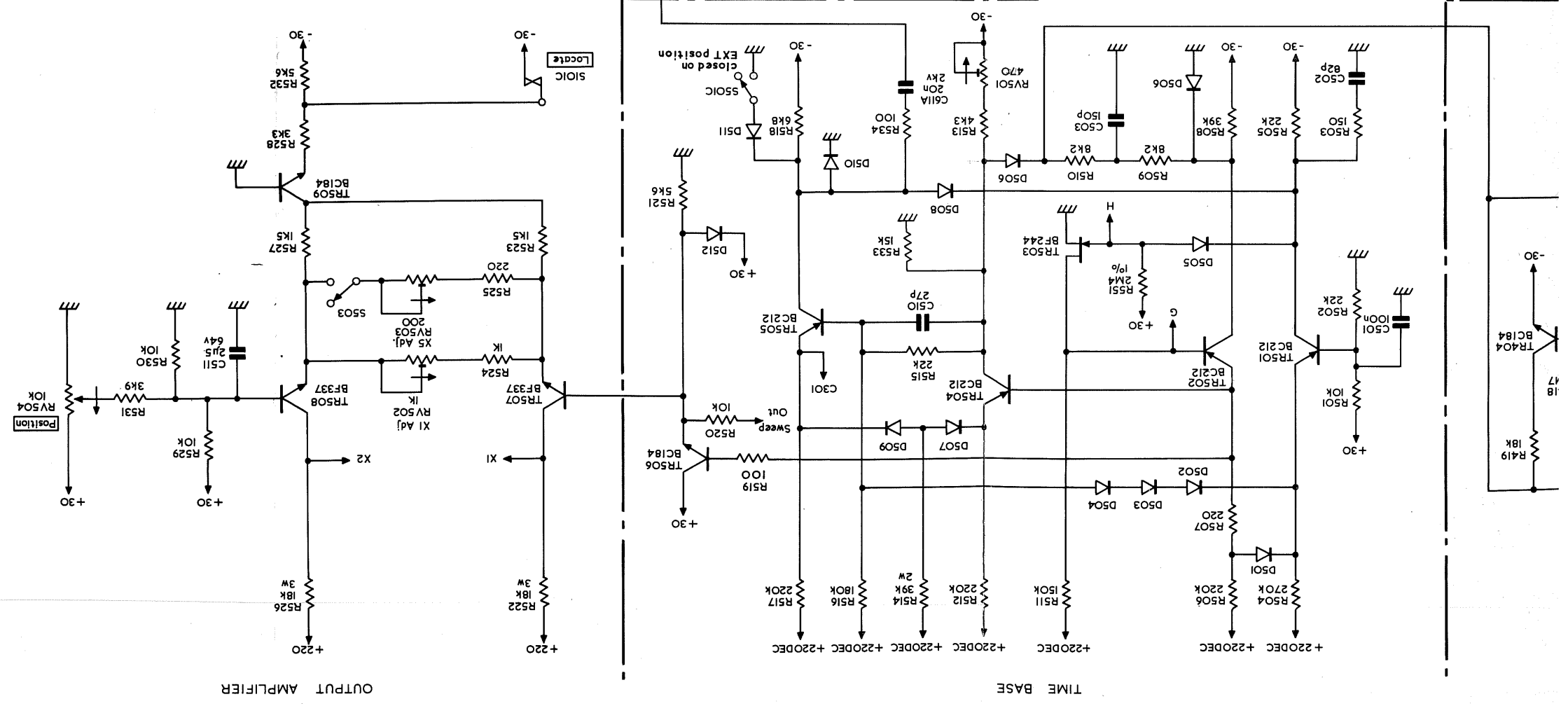


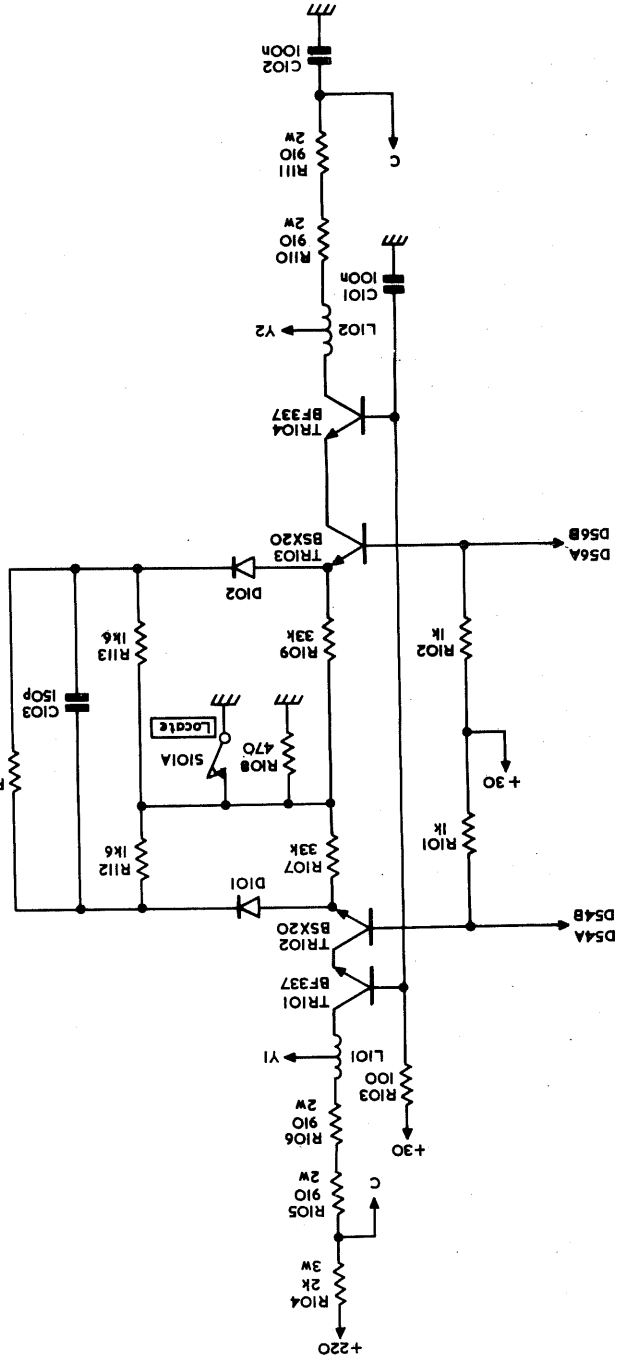
ALL RESISTOR VALUES IN OHMS \pm 5% $\frac{1}{2}$ W UNLESS OTHERWISE INDICATED
 ALL TRIMMER RESISTORS \cdot 1W LINEAR LAW
 ALL CAPACITOR VALUES IN FARADS 250V WORKING UNLESS OTHERWISE INDICATED
 ALL DIODES IN914 UNLESS OTHERWISE INDICATED

SCOR EX 4-D10

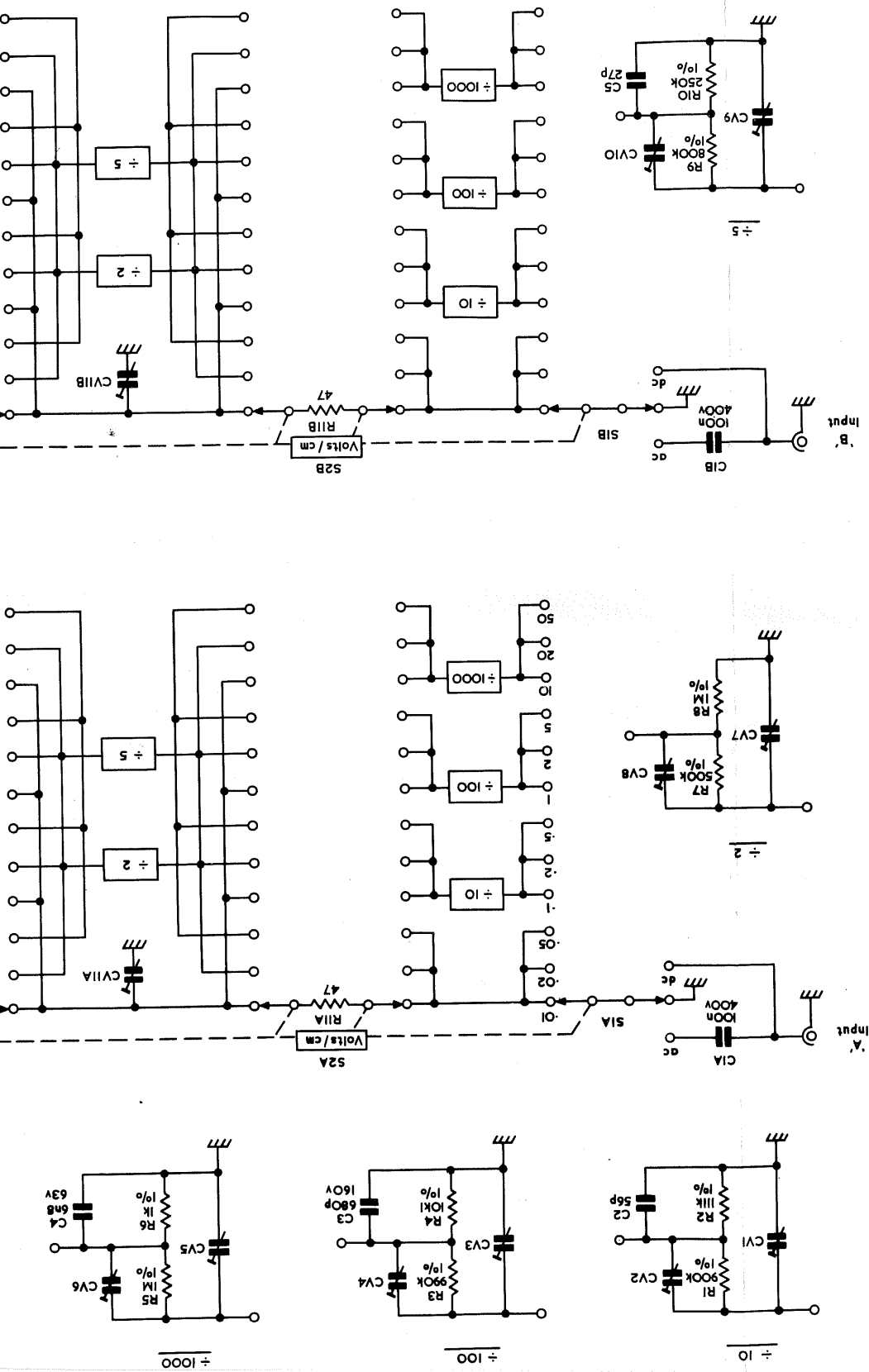


wme-westvale engineers

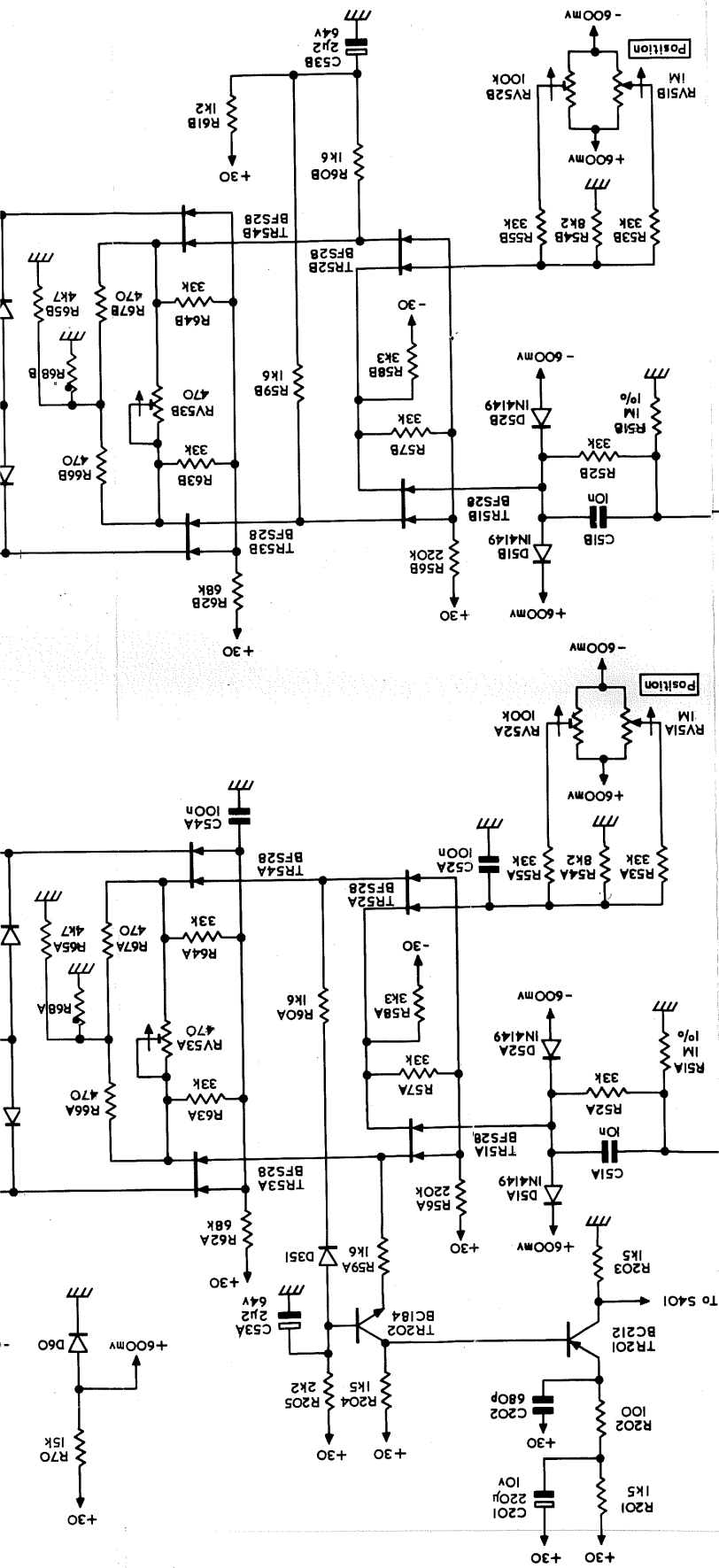
OUTPUT AMPLIFIER
FITTED TO PCB8 BOARDS



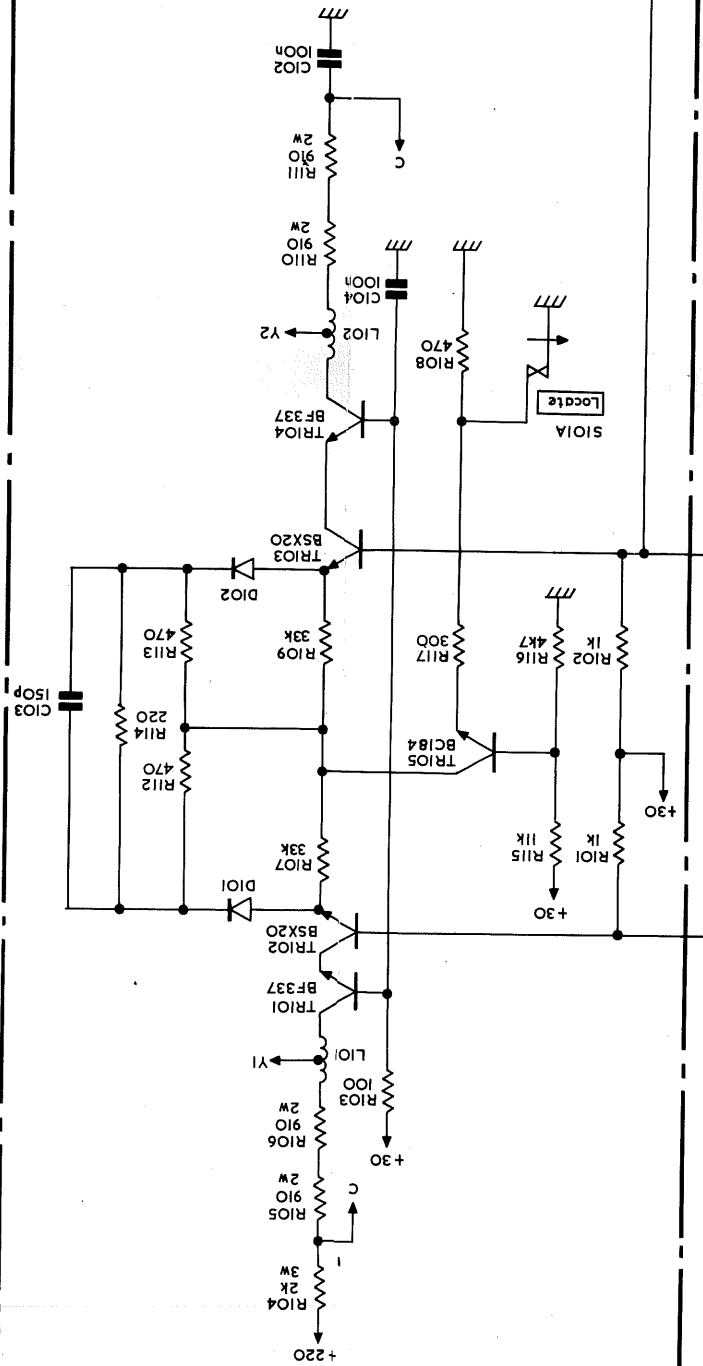
INPUT ATTENUATOR



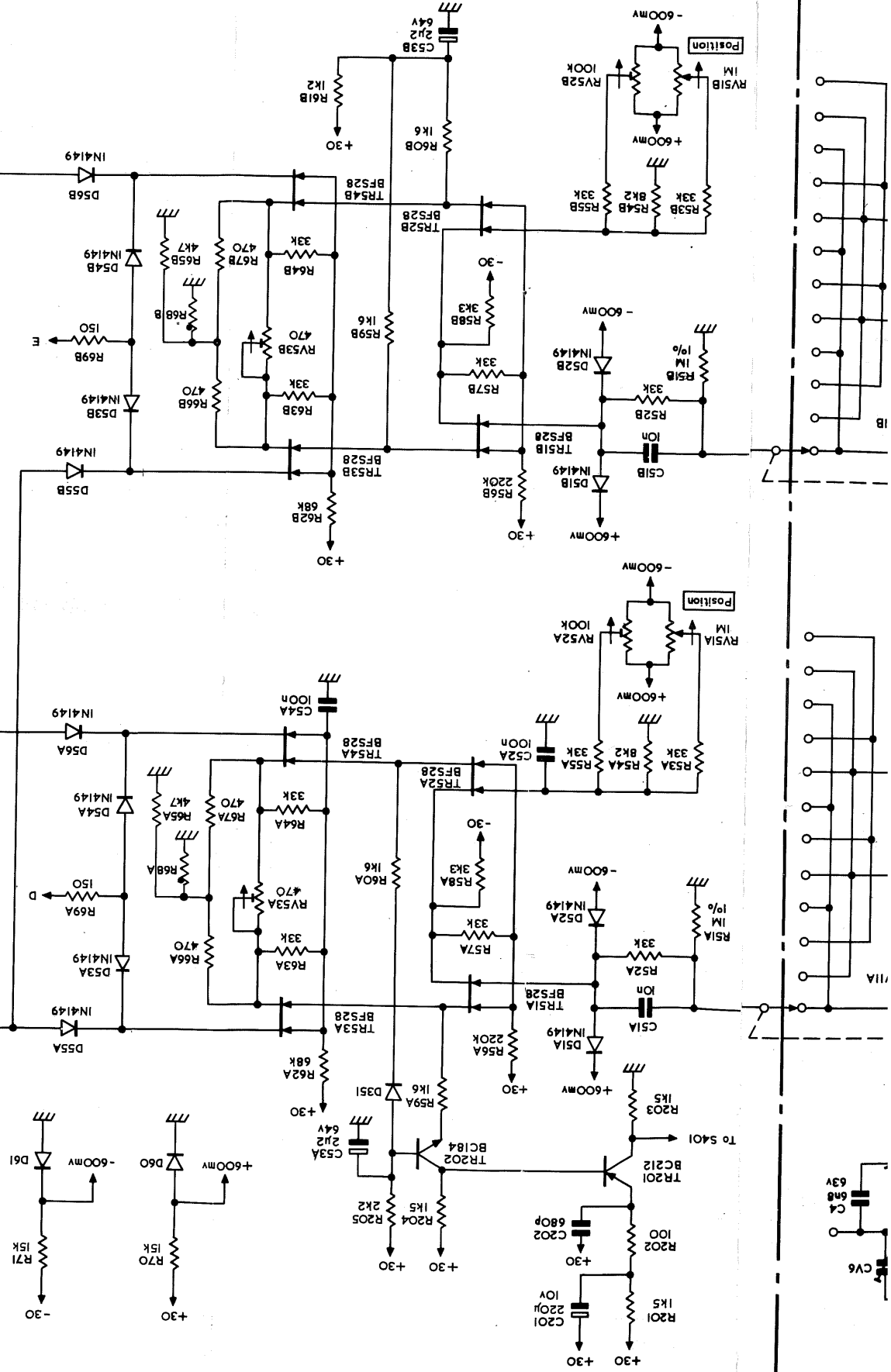
CHANNEL PRE - AMPLIFIERS



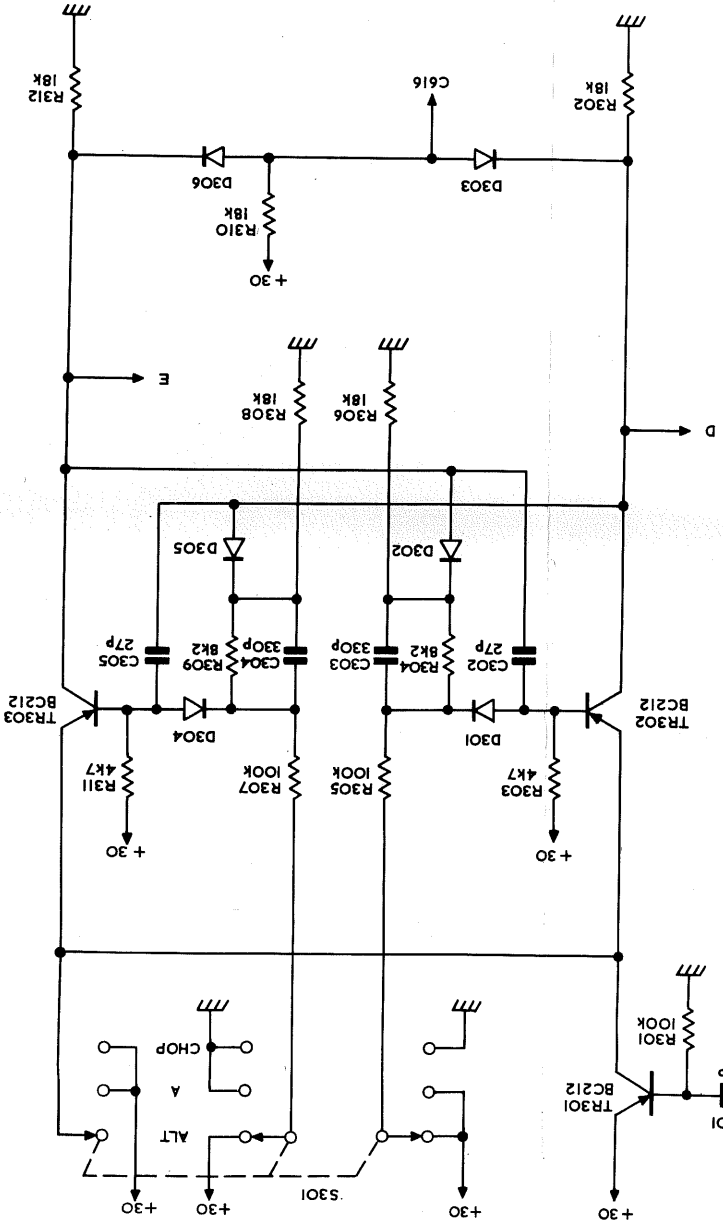
OUTPUT AMPLIFIER



CHANNEL PRE - AMPLIFIERS



BEAM SWITCH BI - STABLE



ALL RESISTOR VALUES IN OHMS $\pm 5\%$ / 2W UNLESS OTHERWISE INDICATED
ALL TRIMMER RESISTORS - 1W LINEAR LAW
ALL CAPACITOR VALUES IN FARADS 250V WORKING UNLESS OTHERWISE INDICATED
ALL TRIMMER CAPACITORS 6-25p
BFS28 TRANSISTORS FITTED AS MATCHED PAIRS eg. TR51 - TR52
ALL DIODES IN4148 UNLESS OTHERWISE INDICATED

